

# Employer feedback Report 2016-21

Total number of responses to the survey form = 27

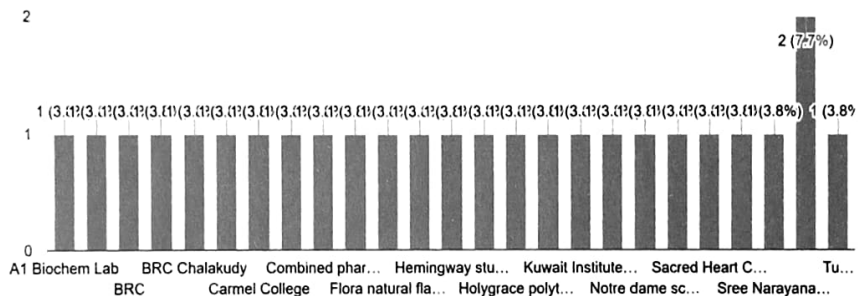
The feedback was collected via Google forms and are sent to the employers. The feedback they have provided was assured to be kept confidential without intimating the employees working with them.

## The feedback analysis

### 1. The name of the organisation/company/industry:

The name of the organization/company/industry:

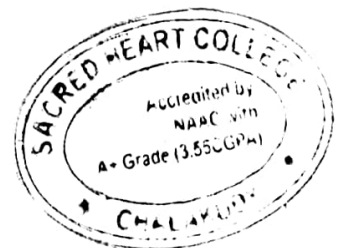
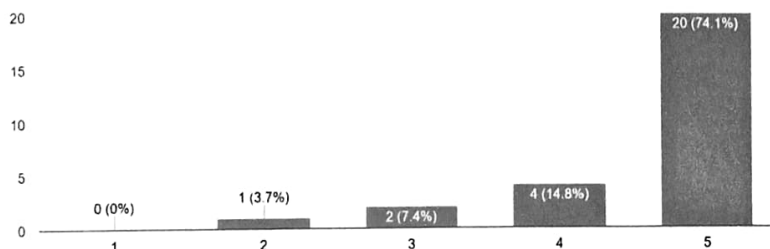
26 responses



### 2. How do you rate the overall performance of the students from SH College working with your firm ?

1. How do you rate the overall performance of the students from SH College working with your firm ?

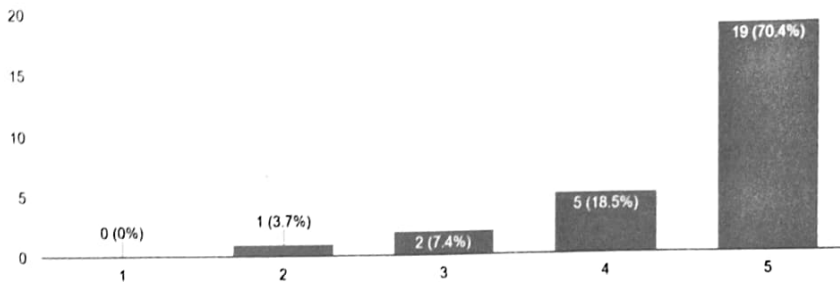
27 responses



The college is proud that most of the employers responded positively to the overall performance of the students from the college.

**3. How do you evaluate the practical knowledge of the employees from our college ?**

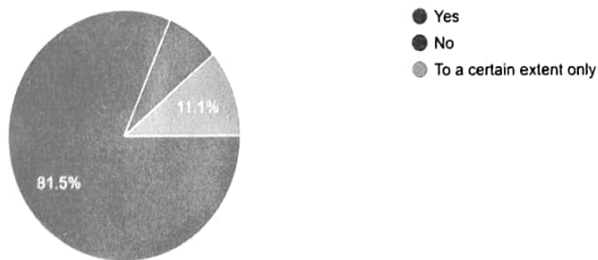
2. How do you evaluate the practical knowledge of the employees from our college ?  
27 responses



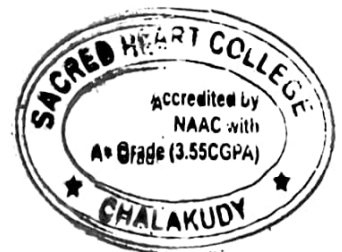
The employers are generally happy with the knowledge of the students of the college. However, more activities for capacity building are to be introduced.

**4. Are they able to apply the knowledge they have earned while pursuing the degree ?**

3. Are they able to apply the knowledge they have earned while pursuing the degree ?  
27 responses

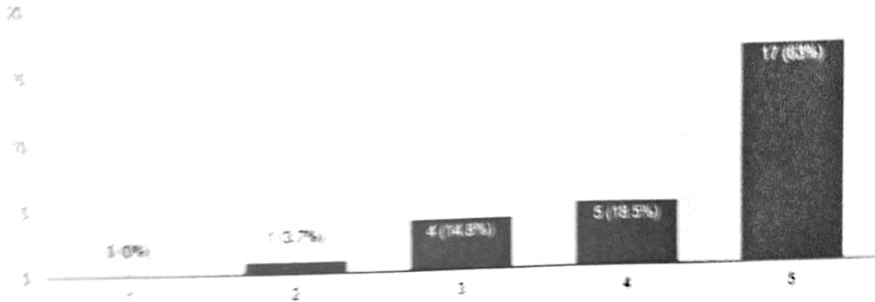


Most of the employers noted positively to the question of the application level of the students on the job.



**5. How do you rate the level of language and communication skills the students from SH have?**

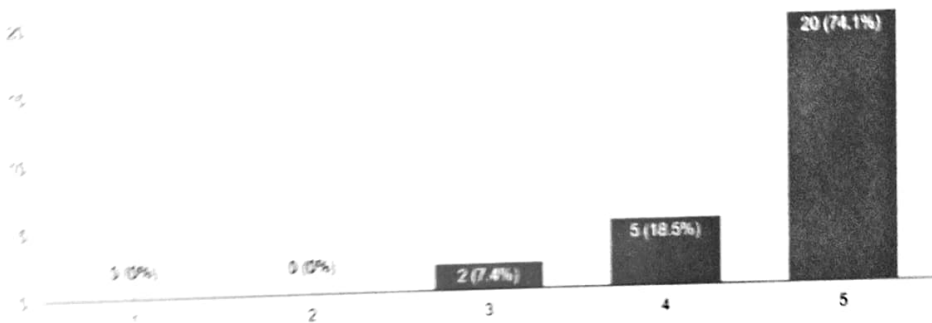
4. How do you rate the level of language and communication skills the students from SH have  
27 responses



With regard to the communication and language skills of the students, there is more to be improved. More programmes are required to improvise the soft skills and language skills of the students.

**6. How do you rate the ethical aspects of the students from SH College?**

5. How do you rate the ethical aspects of the students from SH College?  
27 responses



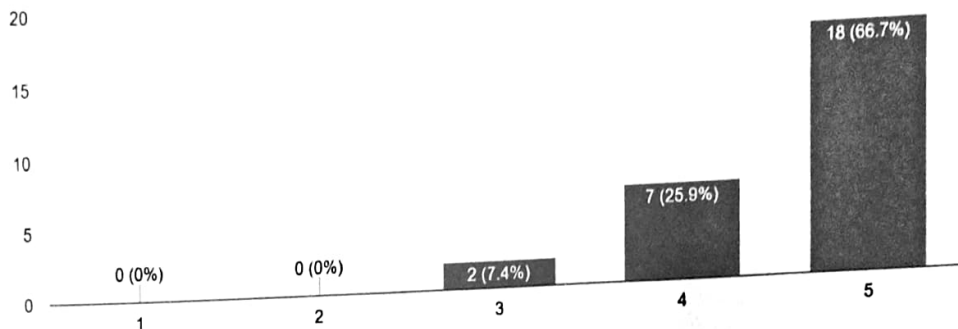
The ethical and moral aspects of the students are noted as extremely good by the employers.



### 7. How do you rate the efficiency and endurance level of the students from our college?

6. How do you rate the efficiency and endurance level of the students from our college?

27 responses

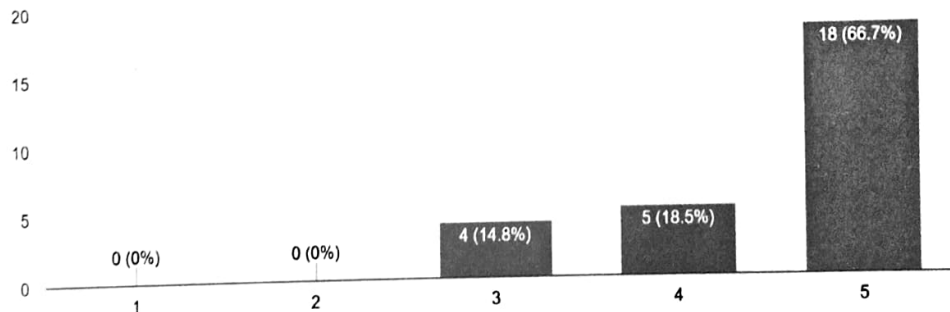


The efficiency level of the students is noted positively by the employers. However, there is room for improvement with regard to this. More activities and programmes are to be included.

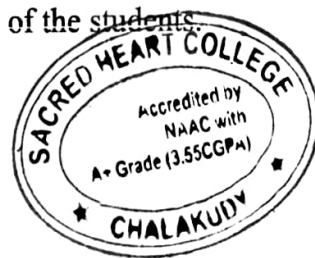
### 8. How do you rate the productivity level of the students from our college?

7. How do you rate the productivity level of the students from our college?

27 responses

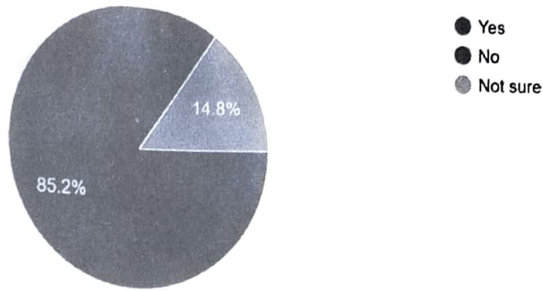


The productivity level of the students is evaluated positively by the employers. More actions are required to improve the quality of the students.

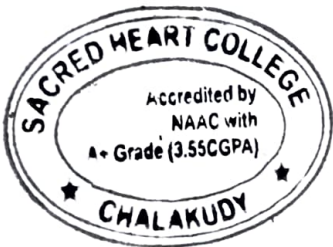


**9. Are you willing to recruit more students from our college in future?**

8. Are you willing to recruit more students from our college in future?  
27 responses



It is a very positive feedback that the employers are ready to recruit more students from the college. The college in turn is required to improve the capability of students to perform more.



*[Signature]*  
**PRINCIPAL**  
SACRED HEART COLLEGE  
CHALAKUDY

